
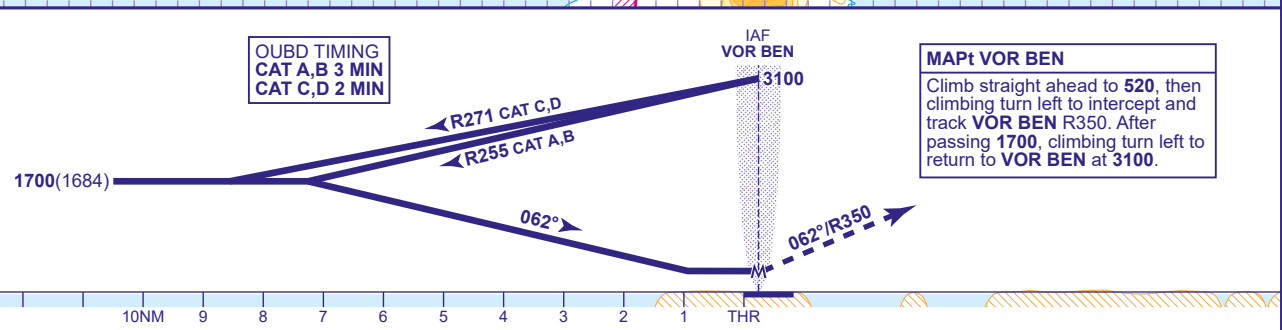
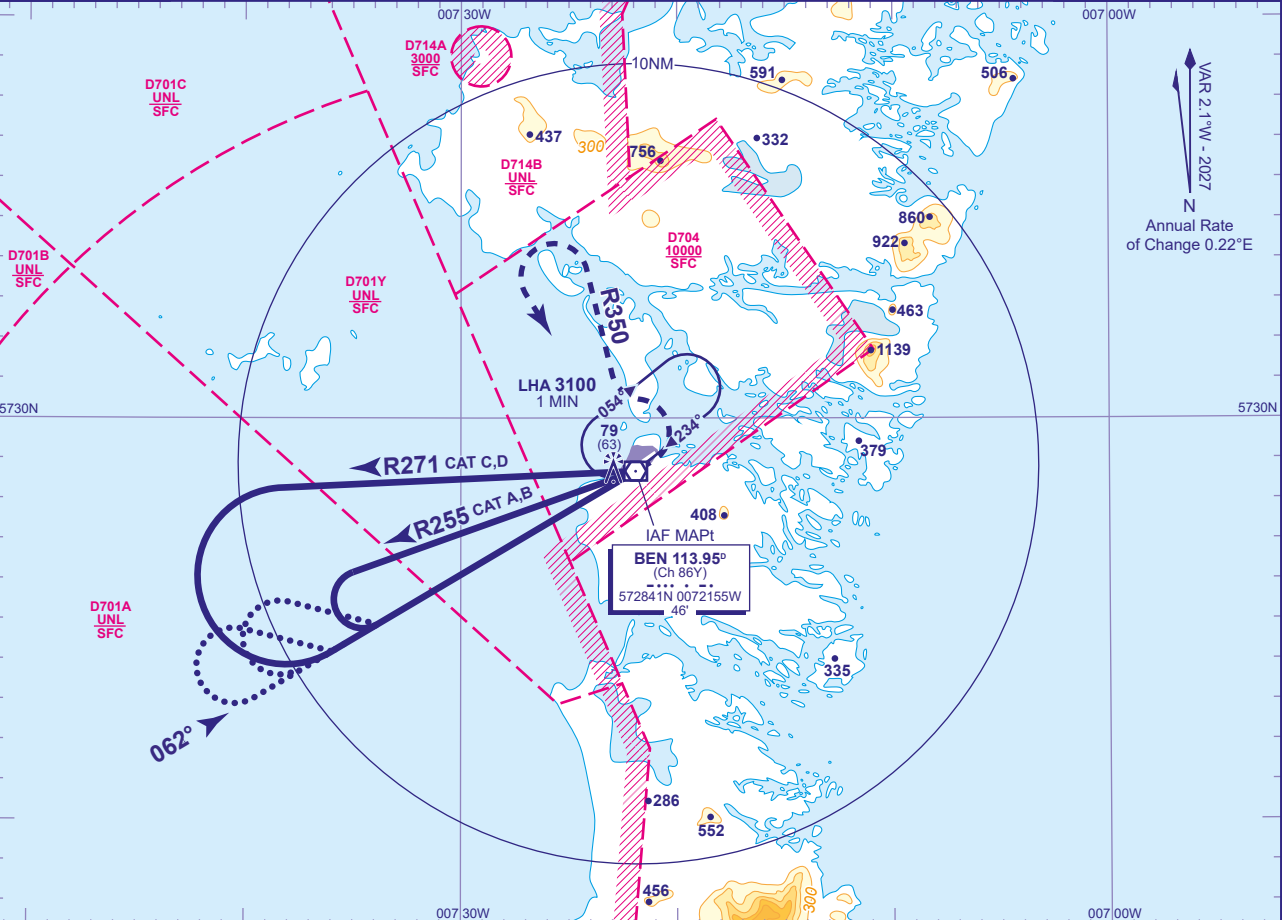


INSTRUMENT APPROACH CHART - ICAO

**BENBECULA**  
**VOR**  
**RWY 06**  
(ACFT CAT A,B,C,D)

	APP 119.205	BENBECULA APPROACH	AD ELEVATION <b>19</b>	TRANSITION ALTITUDE <b>3000</b>
	TWR 119.205	BENBECULA TOWER	THR ELEVATION <b>16</b>	
	AFIS 119.205	BENBECULA INFORMATION	OBSTACLE ELEVATION <b>79 AMSL</b> (63)(ABOVE THR)	
	ATIS 129.885	BENBECULA INFORMATION	BEARINGS ARE MAGNETIC	



Aircraft Category		A	B	C	D
OCA (OCH)	Procedure	410(394)	410(394)	410(394)	410(394)
	Total Area	470(451)	710(691)	810(791)	810(791)

**ALTERNATIVE PROCEDURE (PROCEDURE TURN REVERSAL)**  
Overhead VOR BEN (IAF) at 3100, fly outbound on R242 descending to 1700(1684). For CAT A,B 3MIN and CAT C,D 2MIN prior to procedure turn right, when established on FAT descend to MDH.

- NOTES**
- 1 FAT is offset 4.3° from RWY 06 C/L.
  - 2 Procedures interact with Danger Areas EGD701A, 701B, 701C, 701Y and EGD704. Procedure available subject to ATC permission.
  - 3 Base Turn and Procedure Turn for CAT C and D aircraft are based on 250KIAS to accommodate military aircraft.

CHANGE (1/26): EGD714A/B ADDED.